

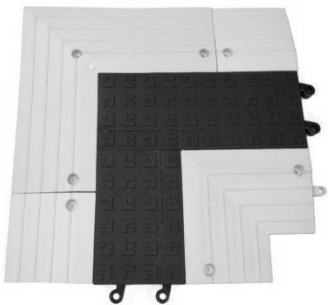
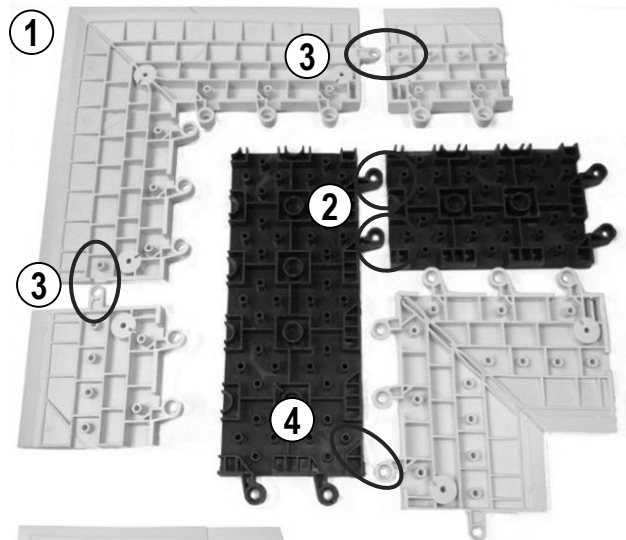
ERGODECK® CABLE BRIDGE KIT ASSEMBLY

Corner Kit - 560.78x15x15BLYL

- Contents:
- (1) yellow inside corner ramp
 - (1) yellow outside corner ramp
 - (2) yellow side ramps
 - (2) 6" wide blue tiles

NOTE: Use firm pressure or a rubber mallet to connect.
You will hear/feel a "click" when connectors are fully engaged.

- 1 Arrange all components upside down in configuration shown below, paying particular attention to the placement of all tabs
- 2 Connect tabs to corresponding rods on 2 blue center tiles
- 3 Connect end tabs to corresponding end rods to join 3 outside ramp components
- 4 Lay inside tabs of outside corner section and inside corner over corresponding rods of blue center tiles and connect.



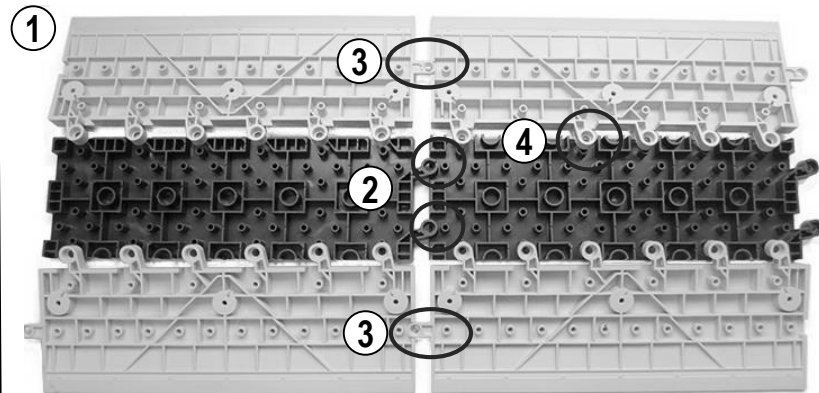
Assembled Dimensions:
15" wide x 15" long

Straight Kit - 560.78x18x36BLYL

- Contents:
- (4) yellow 18" side ramps
 - (2) 6" wide blue tiles

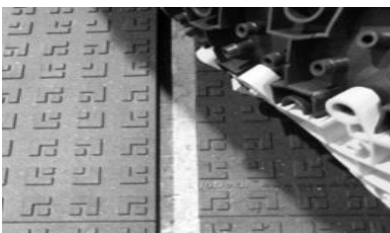
NOTE: Use firm pressure or a rubber mallet to connect.
You will hear/feel a "click" when connectors are fully engaged.

- 1 Arrange all components upside down in configuration shown below, paying particular attention to the placement of all tabs
- 2 Connect tabs to corresponding rods on 2 blue center tiles
- 3 Connect end tabs to corresponding end rods on both sections of side ramps
- 4 Lay inside tabs of side ramps over corresponding rods of blue center tiles and connect



Assembled Dimensions: 18" wide x 36" long

INSTALLATION



- 1 Create 1-2" channel between ErgoDeck® floor tiles.
- 2 Route cables/wires.
- 3 Lay the assembled bridge over the channel.
- 4 (optional) Anchor bridge to tiles with 12 - 3/4" metal screws.

